



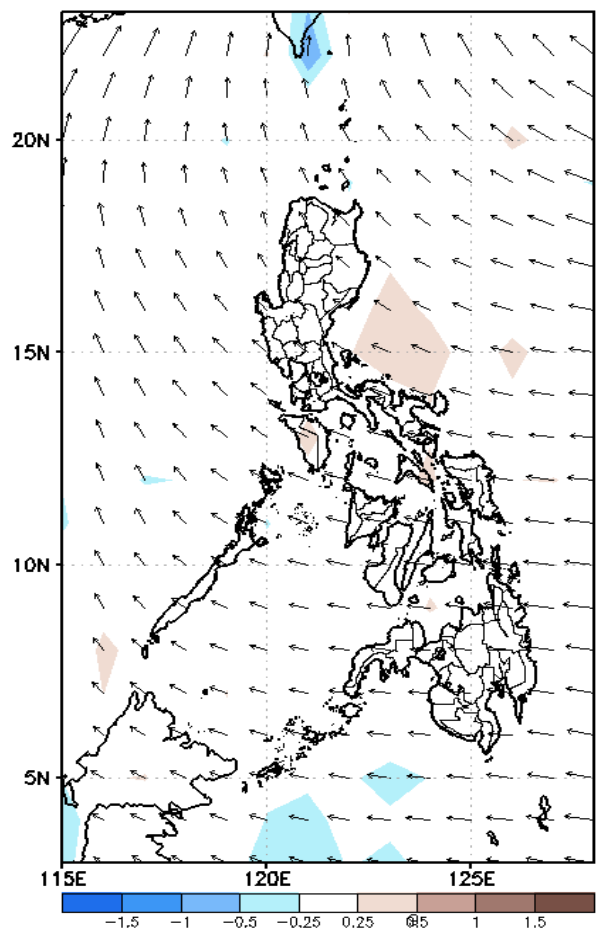
# Week 1 & Week 2 Forecast for the Philippines using GEFS Model



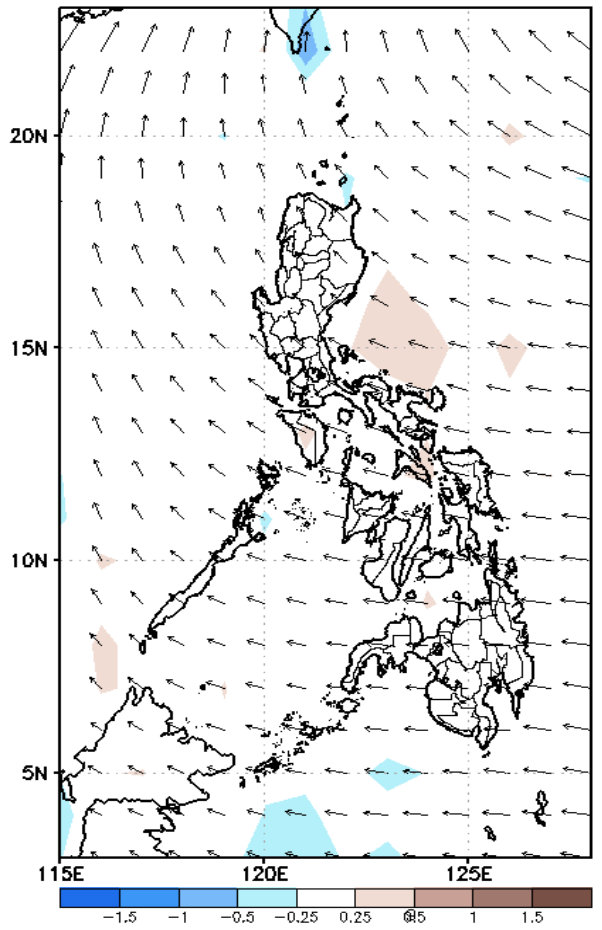
# GEFS Week-1 Wind Forecasts:

## Week 1: Jun 26-Jul 02, 2024

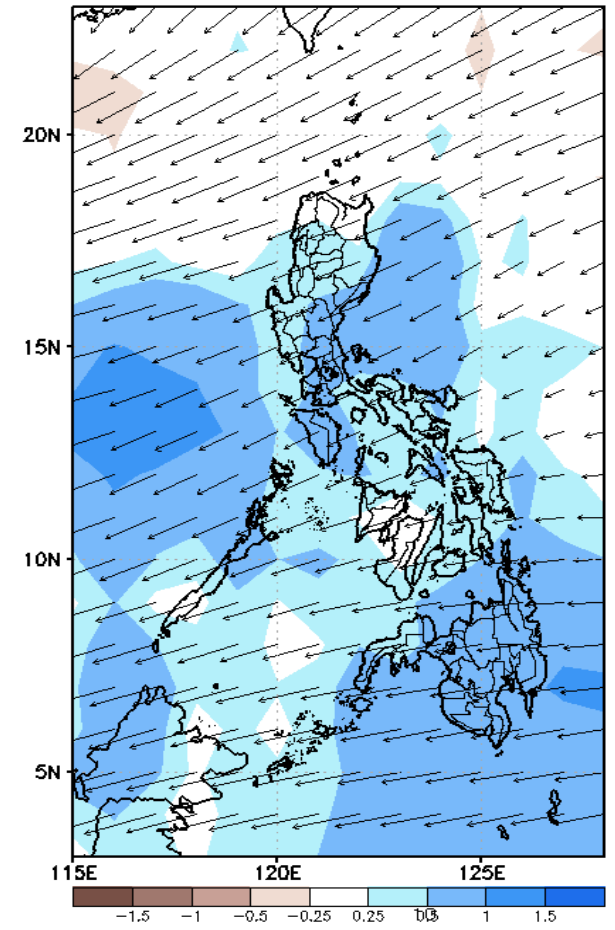
GEFS Week-1 850-hPa Divergence and Wind Anomaly  
Valid: 20240626 - 20240702



GEFS Week-1 700-hPa Divergence and Wind Anomaly  
Valid: 20240626 - 20240702

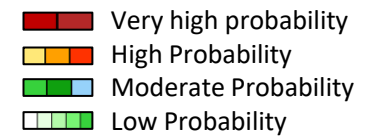


GEFS Week-1 200-hPa Divergence and Wind A  
Valid: 20240626 - 20240702



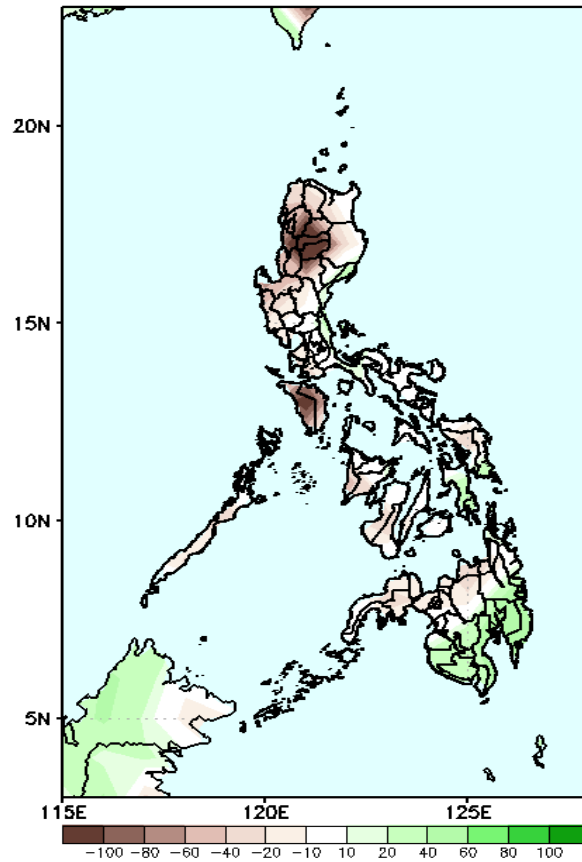
Easterlies affecting most parts of the country during the forecast period.

# Precipitation Anomaly and Exceedance Probability > 25/50 mm



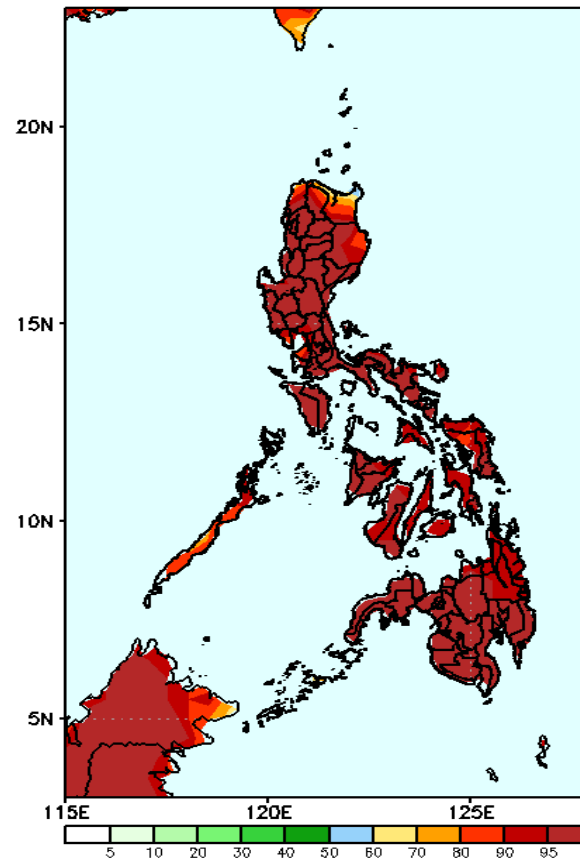
## Week 1: Jun 26-Jul 02, 2024

GEFS Week-1 Precip Anomaly  
Valid: 20240626 - 20240702



Rainfall deficit of more than 100mm in CAR, Ilocos Sur, and Mindoro; 20-60mm for the rest of Luzon, Visayas, and northern Mindanao while 40-70mm increase of rainfall for the rest of Mindanao .

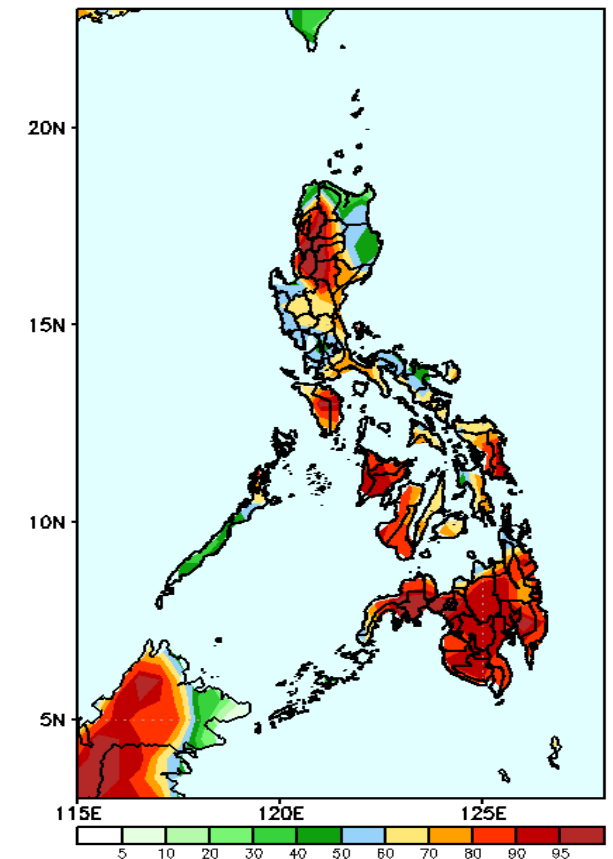
GEFS Week-1 Exceedance Prob. > 25mm  
Valid: 20240626 - 20240702



### Probability to Exceed 25mm

- High to very high over most of the country;
- Moderate to high over the northern section of Cagayan.

GEFS Week-1 Exceedance Prob. > 50mm  
Valid: 20240626 - 20240702

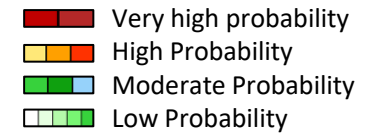


### Probability to Exceed 50mm

- High to very high over Mindanao, Western Visayas, CAR, La Union, Ilocos Sur;
- Moderate to high over the rest of Luzon and Visayas.

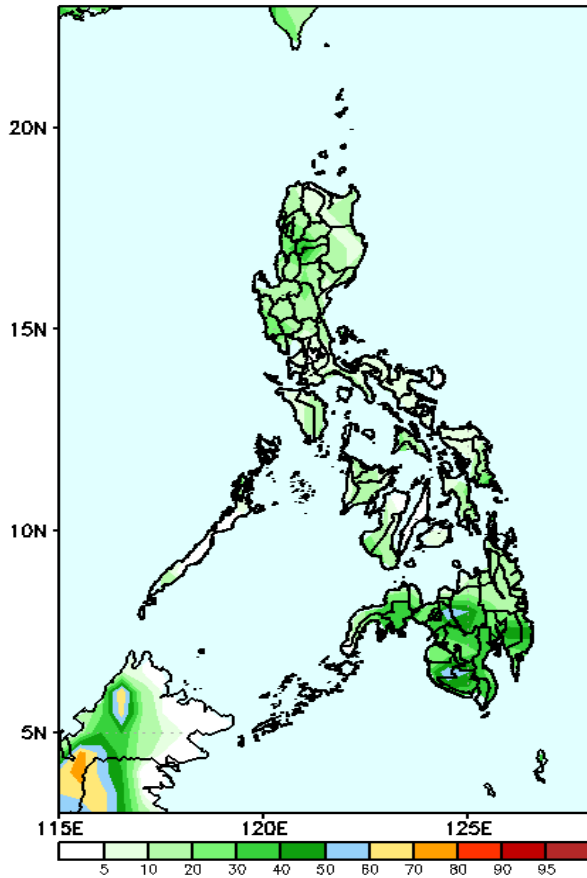


# Exceedance Probability > 100/150/200 mm



Week 1: Jun 26-Jul 02, 2024

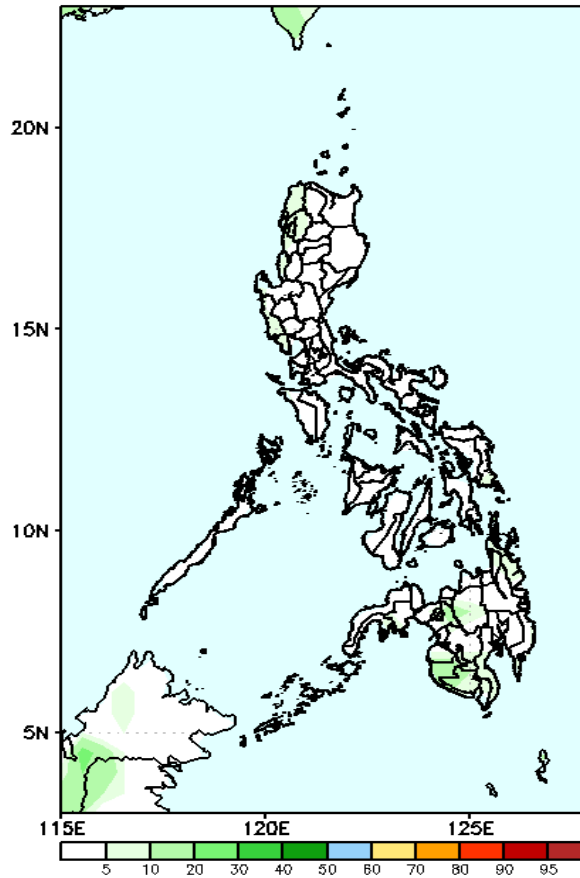
GEFS Week-1 Exceedance Prob. > 100mm  
Valid: 20240626 - 20240702



### Probability to Exceed 100mm

- Low to moderate over Mindanao;
- Low over Luzon and Visayas.

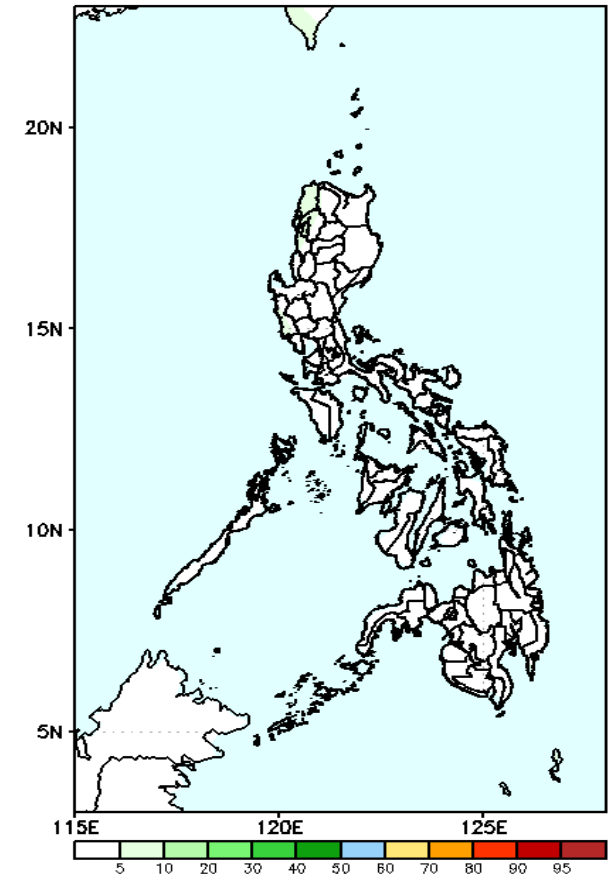
GEFS Week-1 Exceedance Prob. > 150mm  
Valid: 20240626 - 20240702



### Probability to Exceed 150mm

- Low across the country.

GEFS Week-1 Exceedance Prob. > 200mm  
Valid: 20240626 - 20240702



### Probability to Exceed 200mm

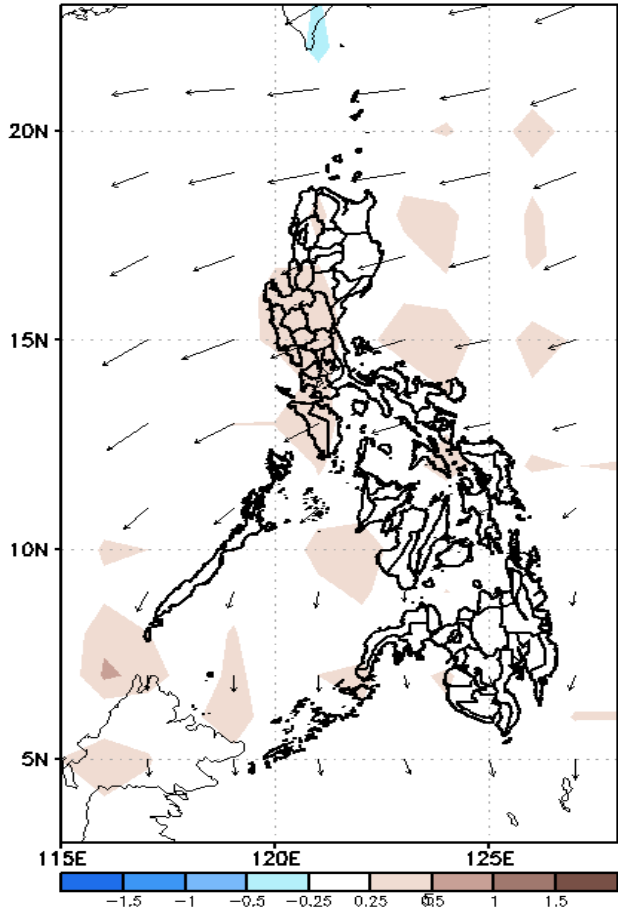
- Low across the country.



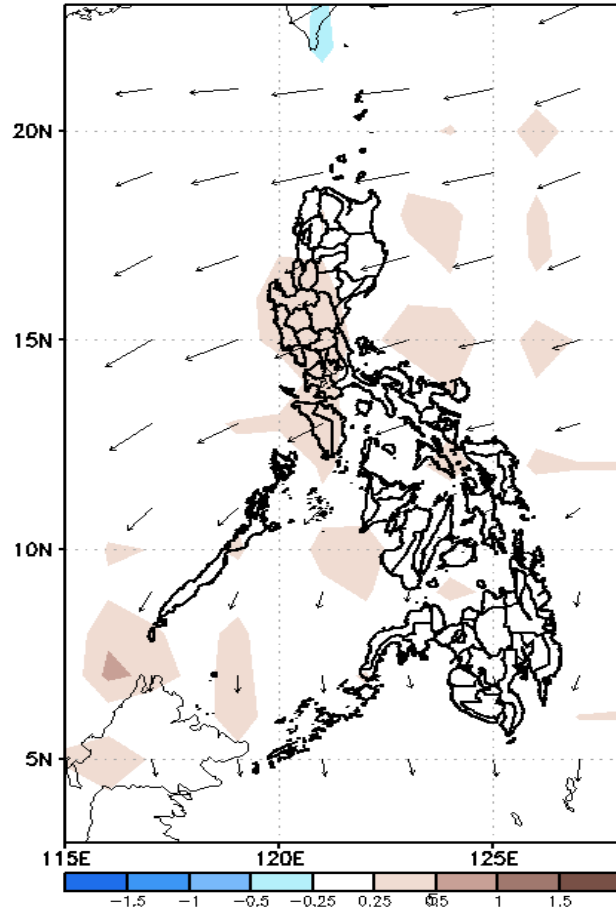
# GEFS Week-2 Wind Forecasts:

Week 2: Jul 03-09, 2024

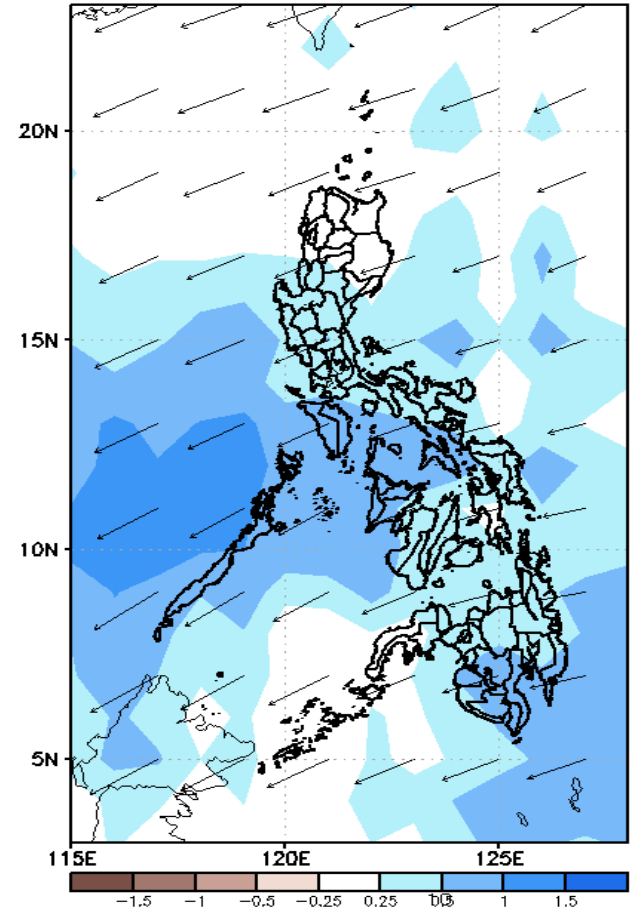
GEFS Week-2 850-hPa Divergence and Wind Anom  
Valid: 20240703 - 20240709



GEFS Week-2 700-hPa Divergence and Wind Anom  
Valid: 20240703 - 20240709

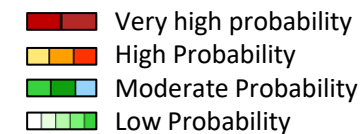


GEFS week-2 200-hPa Divergence and Wind Anom  
Valid: 20240703 - 20240709



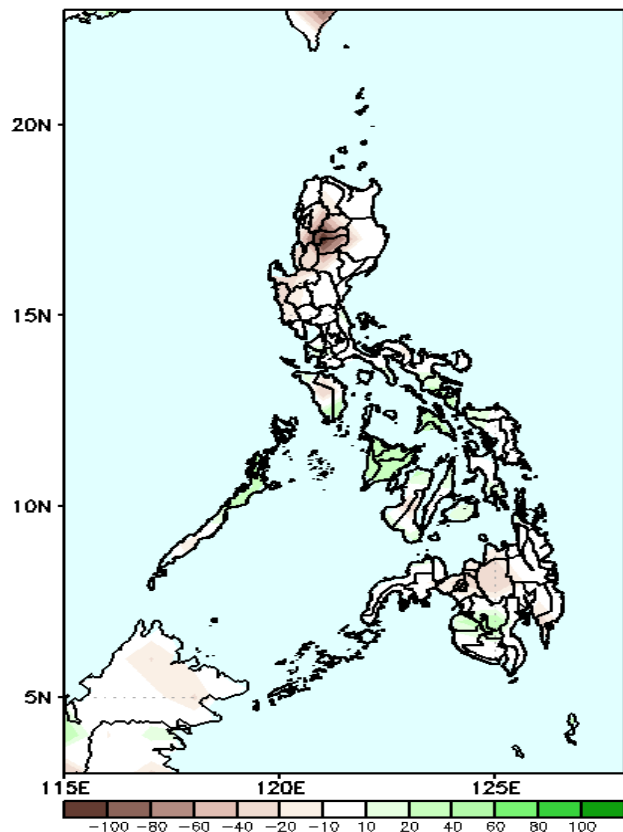
Easterlies affecting most parts of the country during the forecast period.

# Precipitation Anomaly and Exceedance Probability > 25/50 mm

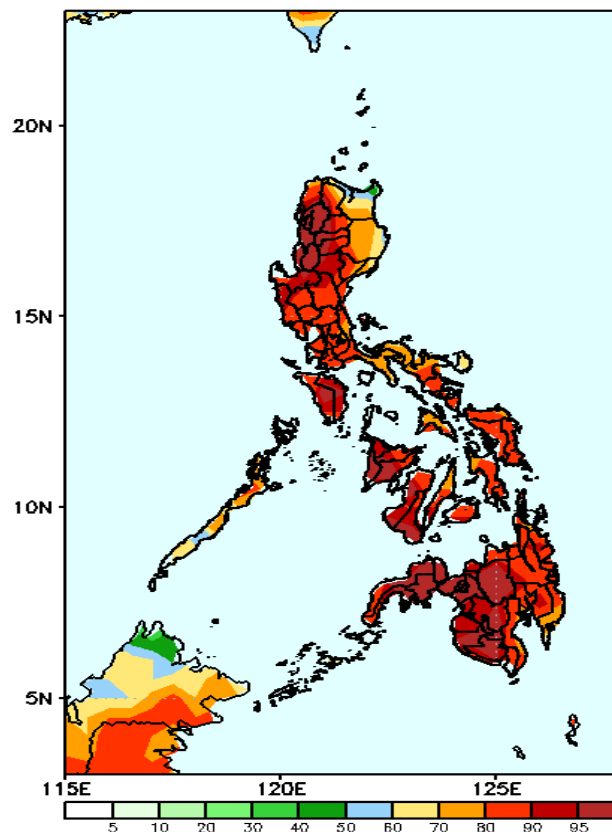


Week 2: Jul 03-09, 2024

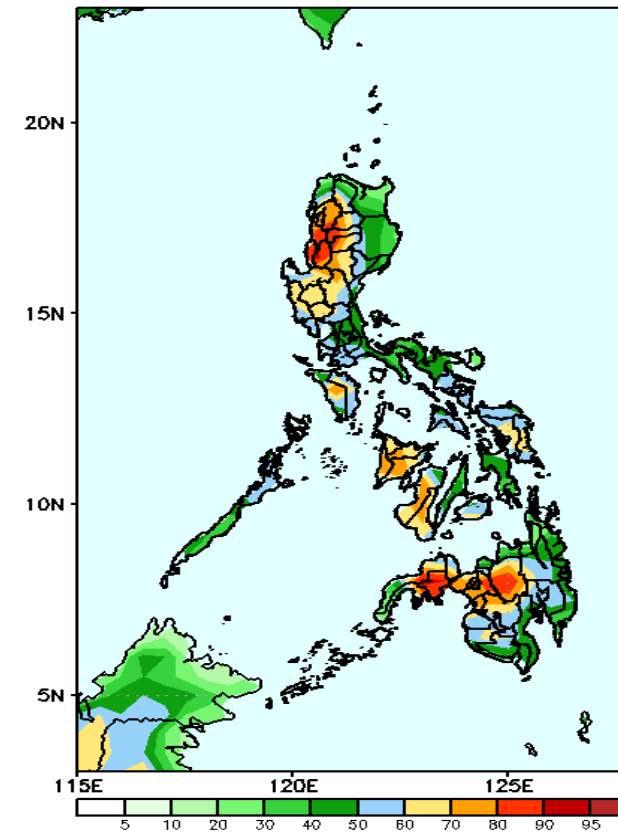
GEFS Week-2 Precip Anomaly  
Valid: 20240703 - 20240709



GEFS Week-2 Exceedance Prob. > 25mm  
Valid: 20240703 - 20240709



GEFS Week-2 Exceedance Prob. > 50mm  
Valid: 20240703 - 20240709



Rainfall deficit of 20-80mm in most parts of the country except in Masbate and Panay Island where 20-60mm of rainfall is expected.

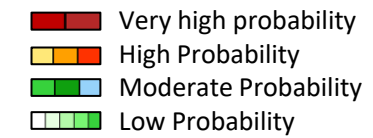
## Probability to Exceed 25mm

- High to very high over most of the country;
- Moderate to high over Palawan and the northern section of Cagayan.

## Probability to Exceed 50mm

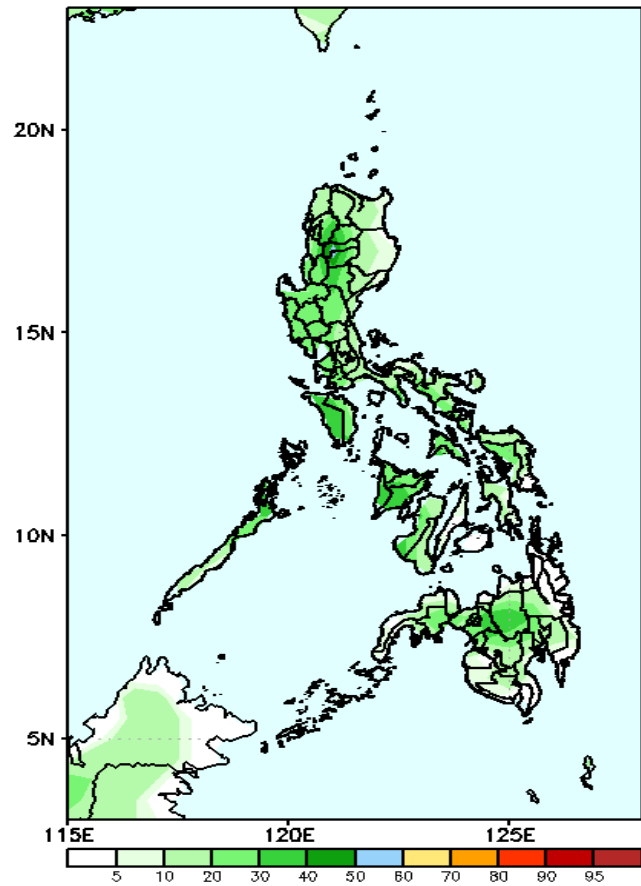
- Moderate to high over most of the country;
- Low to moderate over the northern and eastern sections Cagayan Valley.

# Exceedance Probability > 100/150/200 mm



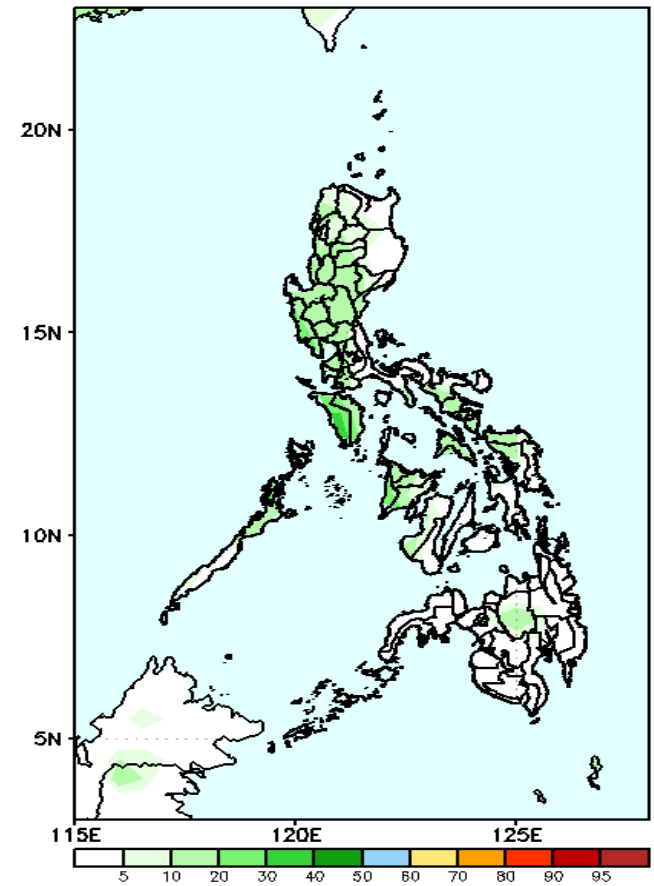
Week 2: Jul 03-09, 2024

GEFS Week-2 Exceedance Prob. > 100mm  
Valid: 20240703 - 20240709



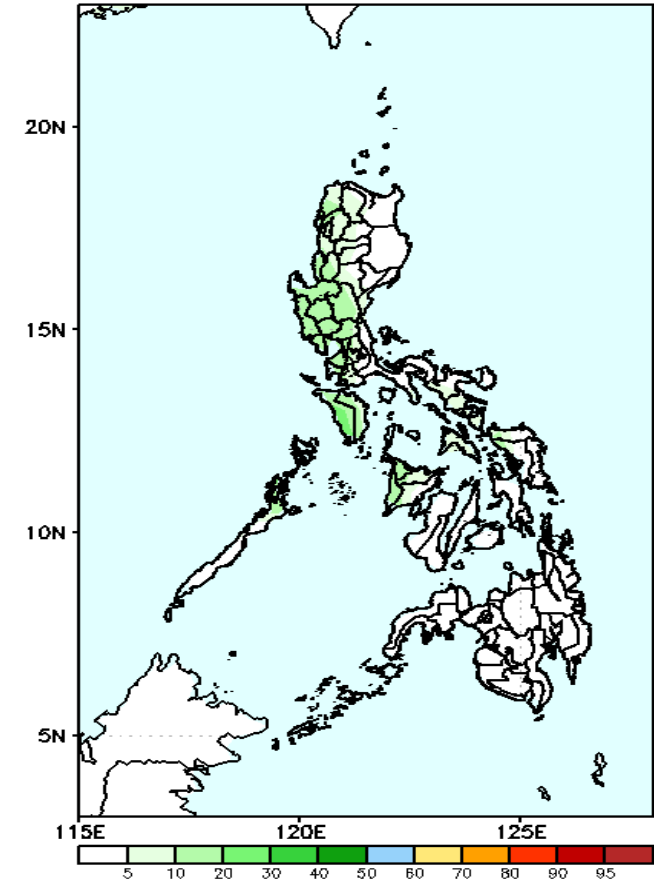
**Probability to Exceed 100mm**  
• Low to moderate over country.

GEFS Week-2 Exceedance Prob. > 150mm  
Valid: 20240703 - 20240709



**Probability to Exceed 150mm**  
• Low across the country.

GEFS Week-2 Exceedance Prob. > 200mm  
Valid: 20240703 - 20240709

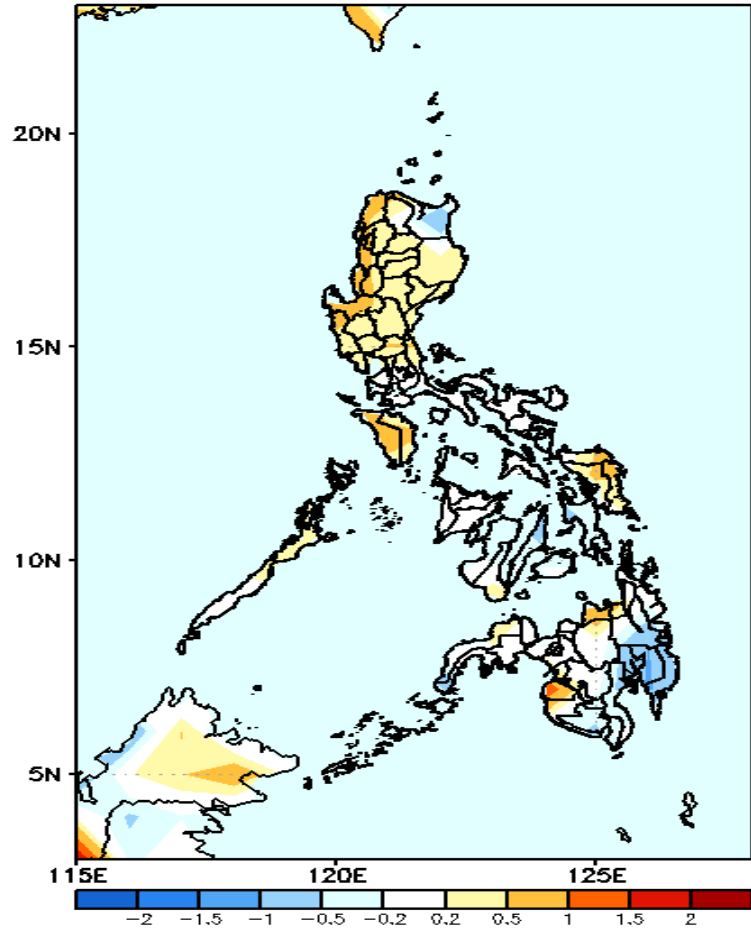


**Probability to Exceed 200mm**  
• Low across the country.



# GEFS Week-1 & 2 Forecasts: T2m Anomaly

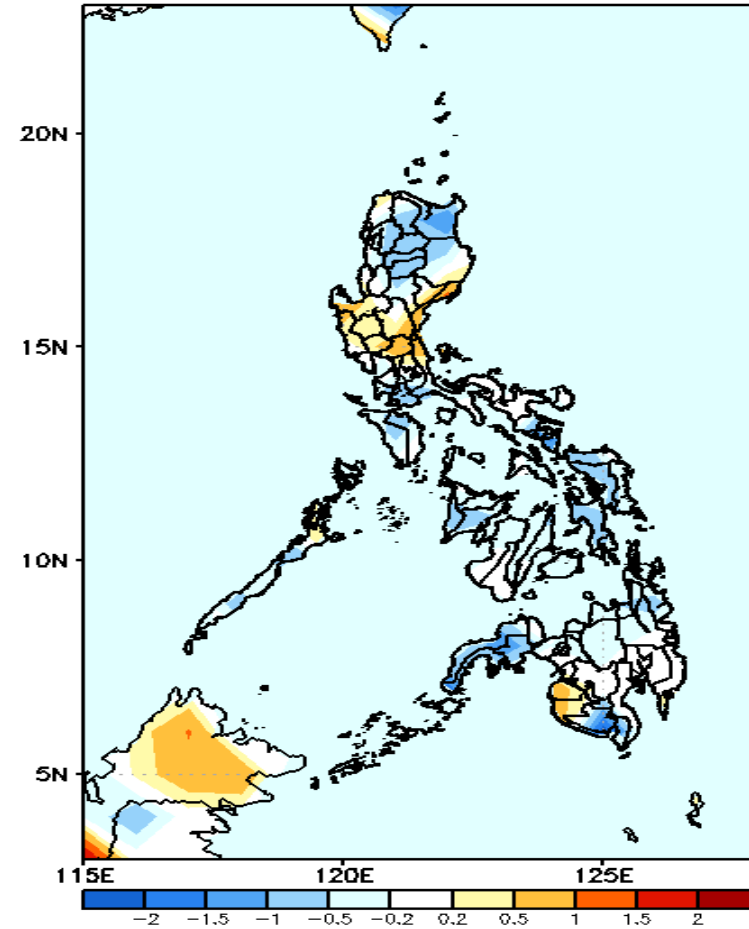
GEFS Week-1 T2m Anomaly  
Valid: 20240626 – 20240702



## 2m Temperature Week 1: Jun 24-30, 2024

Near to slightly warmer than average surface air temperature will likely be experienced in most parts of the country except in the southeastern part of Mindanao where slightly cooler temperature is expected.

GEFS Week-2 T2m Anomaly  
Valid: 20240703 – 20240709



## 2m Temperature Week 2: Jul 03-09, 2024

Near to cooler surface air temperature will likely be experienced in most parts of the country except in central Luzon and some areas in eastern Luzon, Maguindanao and Sultan Kudarat where near to slightly warmer than average temperature is expected.